

Lesson 3

LINE and SPACE NAMES

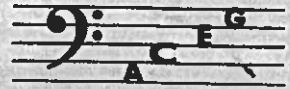
Each line and space of a staff has a letter name in relation to its clef sign.

The first seven letters of the alphabet are used in naming the lines and spaces of both clefs,
A - B - C - D - E - F - G.

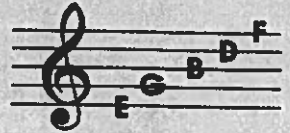
The names of the four spaces in the treble clef spell F A C E.



In the bass clef they spell A C E - G.



You can remember the names of the five lines in the treble clef by "Every Good Boy Does Fine".



In the bass clef remember "Good Boys Do Fine Always".



STUDENT ASSIGNMENT

Date _____

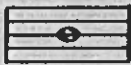
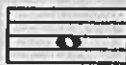
Grade _____

- How many letters of the alphabet are used in naming the lines and spaces of a staff? _____
- Write the letter names of the spaces in the treble clef. _____
- Write the letter names of the lines in the bass clef. _____
- Write the letter names of the lines in the treble clef. _____
- Write the letter names of the spaces in the bass clef. _____
- Write the letter names of all the lines and spaces from line one to line five on both clefs.
Treble clef _____ Bass clef _____

MEMORIZE: The letter names of the lines and spaces of both the treble clef staff and bass clef staff.


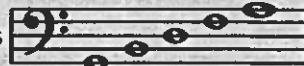
NOTATION

Notes are the symbols placed on the lines and in the spaces of the staff to make music.

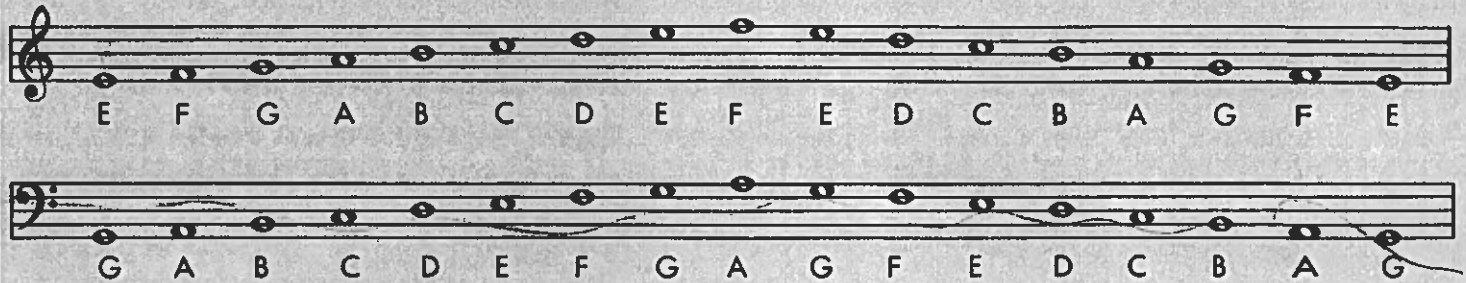
This is a line whole note  a space whole note 

Treble Clef: space whole notes  line whole notes 

F A C E E G B D F

Bass Clef: space whole notes  line whole notes 

A C E G G B D F A



STUDENT ASSIGNMENT

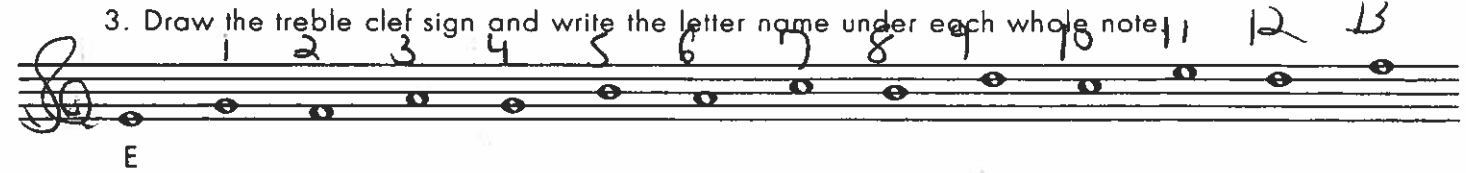
Date _____

Grade _____

1. Draw six line whole notes. _____

2. Draw six space whole notes. _____

3. Draw the treble clef sign and write the letter name under each whole note.



4. Draw the bass clef sign and write the letter name under each whole note.




MEMORIZE: ABCDEFG backwards GFEDCBA - say it over and over.

Lesson 7

THE MEASURE

Music is divided into measures by using bar lines.

These are bar lines. 

The distance between any two bar lines is called a measure.

These are measures. 

When any part of the music is completed, we use a double bar.

This is a double bar indicating  ← the end.

STUDENT ASSIGNMENT

Date _____

Grade _____



1. How many bar lines are there in the staff above? _____
2. How many measures are there in the staff above? _____
3. Draw the treble clef sign on the staff below and divide it into four equal measures.
Place a double bar at the end.



4. Below:- Draw a treble clef sign - divide the staff into eight measures.
Place a double bar at the end - place one whole note in each measure.



5. Below:- Draw a bass clef sign - divide the staff into eight measures.
Place a double bar at the end - place two half notes in each measure.



MEMORIZE: The distance between two bar lines is called a _____